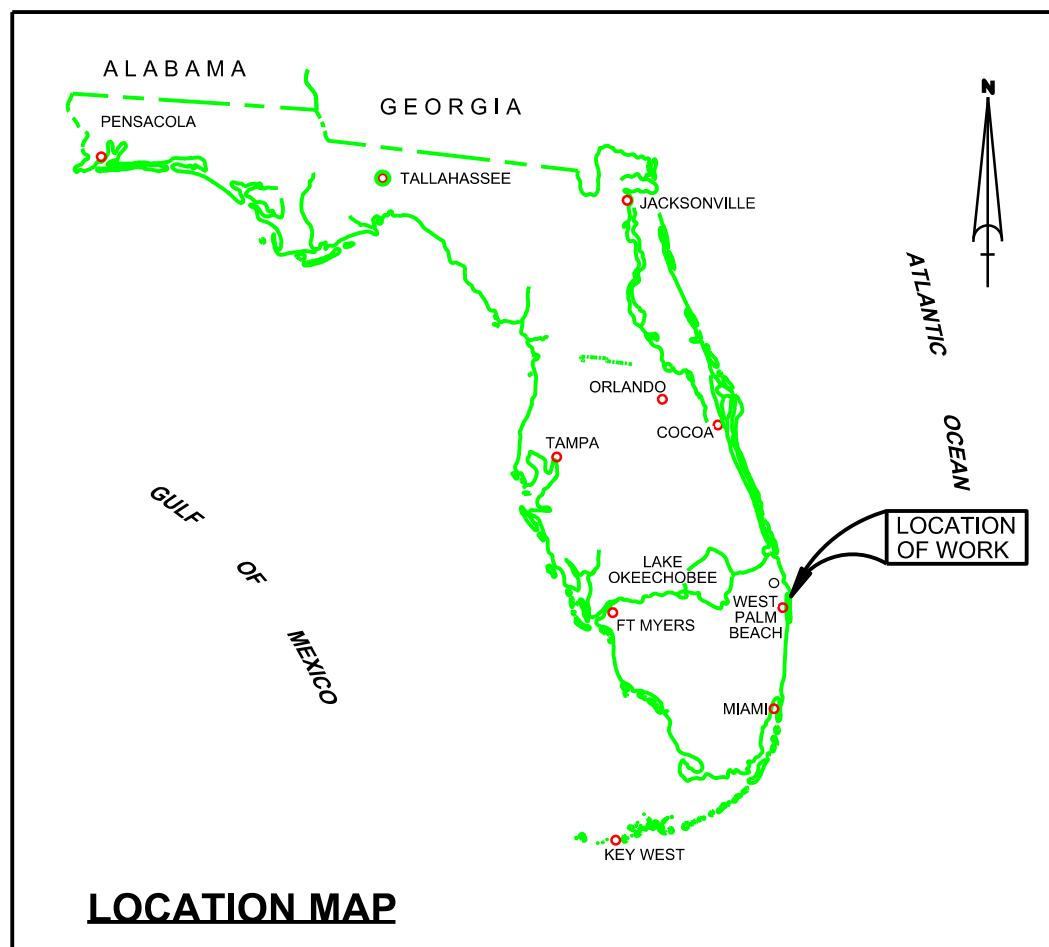
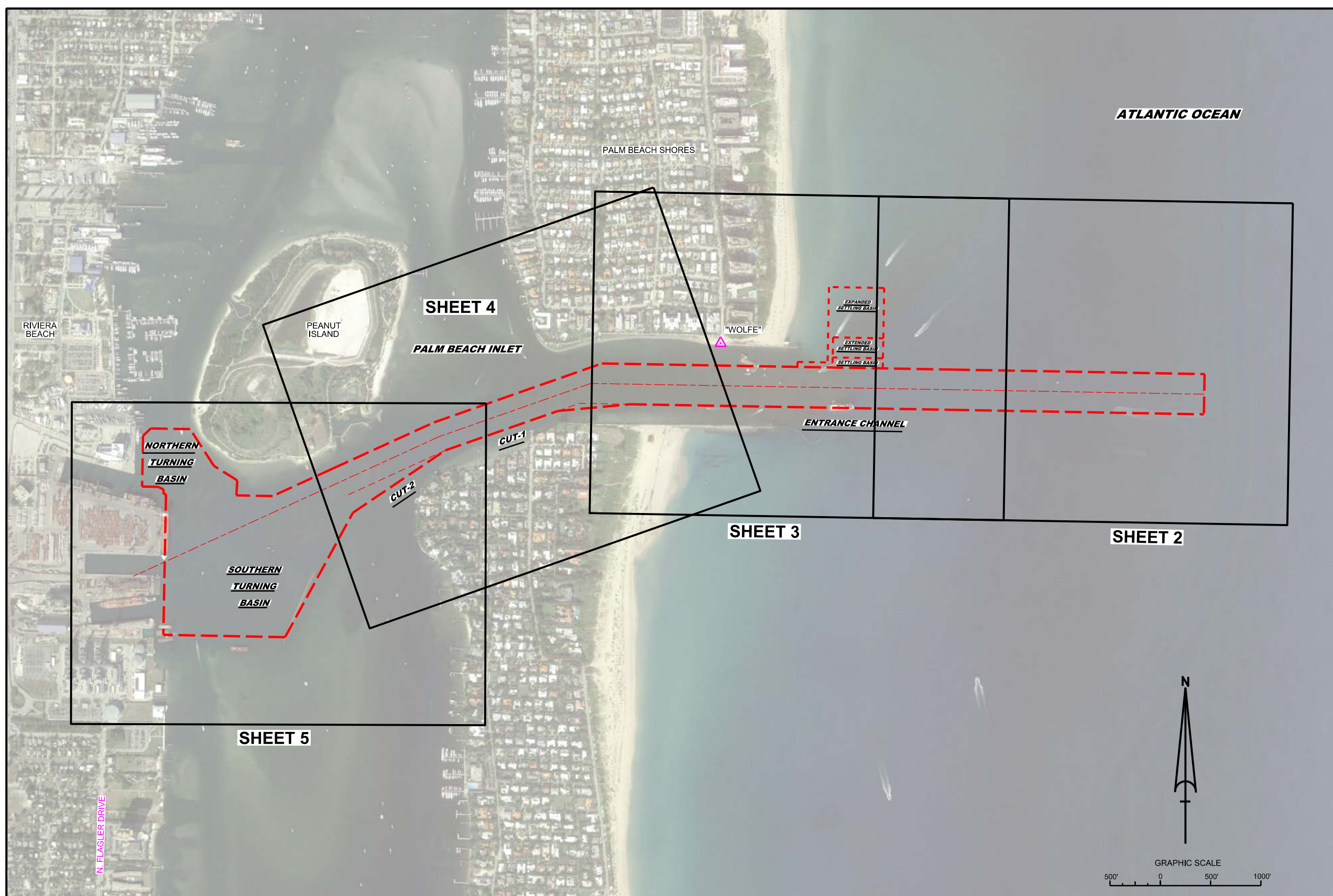


10 9 8 7 6 5 4 3 2 1



PALM BEACH HARBOR, FLORIDA MARCH HYDROGRAPHIC EXAM SURVEY FY21 25, 33, 35, 37 & 39-FOOT PROJECT



SURVEY NOTES

- REFER TO SURVEY NO. 21-141.
 - SOUNDINGS ARE IN FEET AND TENTHS AND REFER TO NOAA'S REPORTED MEAN LOWER LOW WATER (MLLW) OF THE 1983-2001 TIDAL EPOCH.
 - TIDAL REDUCTIONS WERE OBTAINED UTILIZING A REAL-TIME KINEMATIC (RTK) GPS AND REFERENCED TO MLLW UTILIZING A HYPACK KINEMATIC TIDE DATUM (KTD) MODEL. KTD FILE NAME IS: "PALMBEACH_2018 05 03.KTD".
 - ALL ELEVATIONS ARE BELOW THE CHART DATUM UNLESS PRECEDED BY A (+) SIGN.
 - PLANE COORDINATES ARE BASED ON THE TRANSVERSE MERCATOR PROJECTION FOR THE EAST ZONE OF FLORIDA AND REFERENCED TO THE CURRENT REALIZATION OF THE NORTH AMERICAN DATUM OF 1983 (NAD83), BASED ON THE NOAA NATIONAL SPATIAL REFERENCE SYSTEM (NSRS).
 - ALL STATIONING REFERS TO THE CENTERLINE OF THE CHANNEL.
 - THIS SURVEY WAS PERFORMED USING REAL-TIME KINEMATIC (RTK) GPS POSITIONING WITH THE FOLLOWING REFERENCE BASE LOCATION:
REFERENCE BASE LOCATED AT "WOLFIE" (OPUS PID: BBBZ46)
TIDE STAFF LOCATED FROM "COE A 310 RESET" (PID: BBN25)
 - DEPTHS DEPICTED BY THIS SURVEY ARE REFERENCED TO MLLW, TIDAL EPOCH 1983-2001 AS REPORTED BY THE NATIONAL OCEANIC AND ATMOSPHERIC ADMINISTRATION (NOAA). A MODIFIED VERSION OF NOAA'S VDATUM MODEL WAS USED TO CALIBRATE TO THE PUBLISHED MLLW HEIGHT OF THE BENCHMARK ASSOCIATED BELOW:
NOAA TIDAL STATION 872-2588, PORT OF W. PALM BEACH, LAKE WORTH (PID: BBN25)
VERTICAL MEASUREMENTS WERE MADE USING AN EDGETECH 6205. ALL SOUNDINGS SHOWN ARE IN HIGH FREQUENCY (550 KHZ).
- | VESSEL | DATE OF SURVEY | CUT |
|--------|----------------|-------------------------------|
| SB-48 | 27 APR 2021 | TURNING BASIN, CUTS 1 & 2 |
| SB-48 | 29 APR 2021 | ENTRANCE CH., SETTLING BASINS |
- AIDS TO NAVIGATION WERE LOCATED DURING THIS SURVEY.
 - THE INFORMATION DEPICTED ON THIS MAP REPRESENTS THE RESULTS OF SURVEYS MADE ON THE DATES INDICATED ABOVE AND CAN ONLY BE CONSIDERED AS INDICATING THE GENERAL CONDITIONS AT THAT TIME. THIS CHART IS SOLELY FOR THE DISTRIBUTION OF AVAILABLE DEPTHS AT THE TIME OF THE SURVEY.
 - SURVEY ACCURACY PERFORMANCE STANDARDS, QUALITY CONTROL, AND QUALITY ASSURANCE REQUIREMENTS WERE FOLLOWED DURING THIS SURVEY IN ACCORDANCE WITH USACE EM 1110-2-1003, HYDROGRAPHIC SURVEYING, 30 NOV 2013.

LEGEND	
	MONUMENT
	LIGHTED BEACON
	GREEN DAYBEACON
	RED DAYBEACON
	RED LIGHTED BUOY
	GREEN LIGHTED BUOY
	CAN BUOY
	NUN BUOY
	TIDE STAFF
	PROJECT DEPTH

US Army Corps of Engineers
Jacksonville District

SAFETY ON THIS JOB
DEPENDS ON YOU

DEPARTMENT OF THE ARMY
JACKSONVILLE DISTRICT, CORPS OF ENGINEERS
JACKSONVILLE, FLORIDA

Checked by: GHR

Designed by: WRM

Drawn by: WRM

File No: 21-H-HYD-301

Date: APR 2021

21-H-HYD-301.DGN

PALM BEACH HARBOR, FLORIDA

MARCH HYDROGRAPHIC EXAM SURVEY FY21
25, 33, 35, 37 & 39-FOOT PROJECT

INDEX, LOCATION AND VICINITY

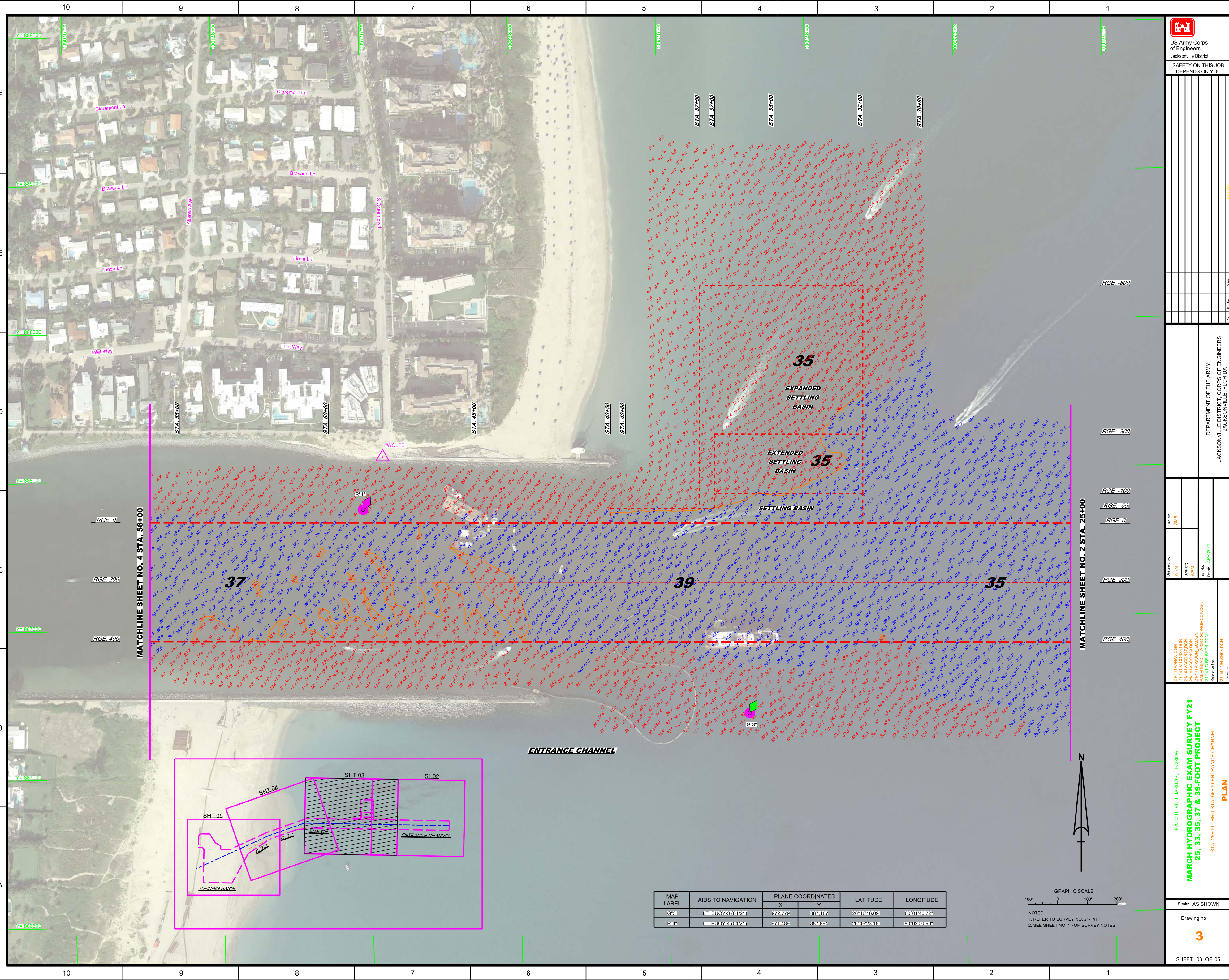
MAP

Scale: AS SHOWN

Drawing no. **1**

SHEET 01 OF 05

10 9 8 7 6 5 4 3 2 1

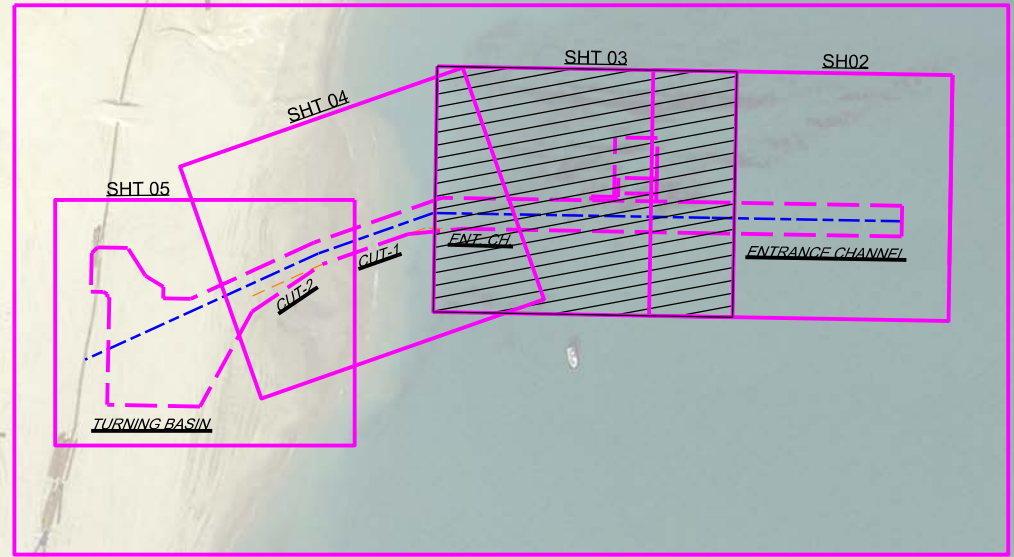


MATCHLINE SHEET NO. 4 STA. 56+00

MATCHLINE SHEET NO. 2 STA. 25+00

RGE. 0
RGE. 200
RGE. 400

RGE. -800
RGE. -300
RGE. -100
RGE. -50
RGE. 0
RGE. 200
RGE. 400



MAP LABEL	AIDS TO NAVIGATION	PLANE COORDINATES		LATITUDE	LONGITUDE
		X	Y		
G*3	BUOY-3 (04/21)	972,779	887,187	26°46'16.09"	80°01'46.72"
R*4	BUOY-4 (04/21)	971,489	887,894	26°46'23.18"	80°02'00.90"



NOTES:
1. REFER TO SURVEY NO. 21-141.
2. SEE SHEET NO. 1 FOR SURVEY NOTES.

DEPARTMENT OF THE ARMY
JACKSONVILLE DISTRICT, CORPS OF ENGINEERS
JACKSONVILLE, FLORIDA

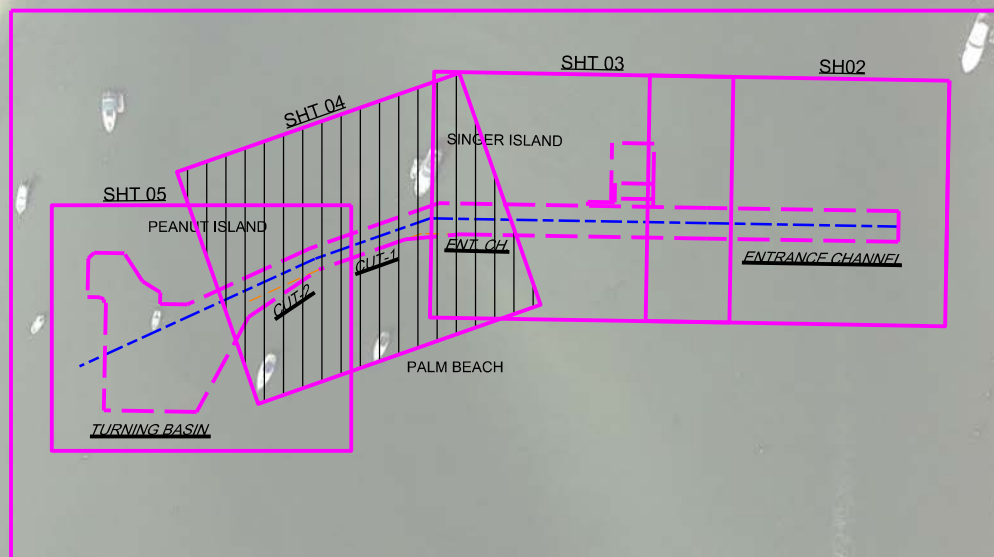
21-141-HARBOR.DGN
21-141-ACON07.DGN
21-141-ACON08.DGN
PALM BEACH HARBOR-CANAL.DGN
21-141-BS-BRIDG.DGN
Reference files: 21-141-HARBOR.DGN

Scale: AS SHOWN

Drawing no. **3**

SHEET 03 OF 05

MAP LABEL	AIDS TO NAVIGATION	PLANE COORDINATES		LATITUDE	LONGITUDE
		X	Y		
G*5	LT-5 (04/21)	970,662	887,414	26°46'18.50"	80°02'10.06"
R*6	LT. BUOY-6 (04/21)	970,555	887,919	26°46'23.51"	80°02'11.20"
G*7	LT. BUOY-7 (04/21)	970,021	887,400	26°46'18.40"	80°02'17.13"
R*8	LT-8 (04/21)	969,324	887,593	26°46'20.36"	80°02'24.80"
G*9	LT-9 (04/21)	968,793	886,910	26°46'13.64"	80°02'30.71"
R*10	LT-10 (04/21)	968,193	887,157	26°46'16.13"	80°02'37.29"
SWIM BUOY	BUOY (04/21)	967,903	887,036	26°46'14.95"	80°02'40.52"
SWIM BUOY	BUOY (04/21)	968,051	887,130	26°46'15.88"	80°02'38.89"
INFO SIGN	SIGN (04/21)	970,088	887,355	26°46'17.95"	80°02'16.39"

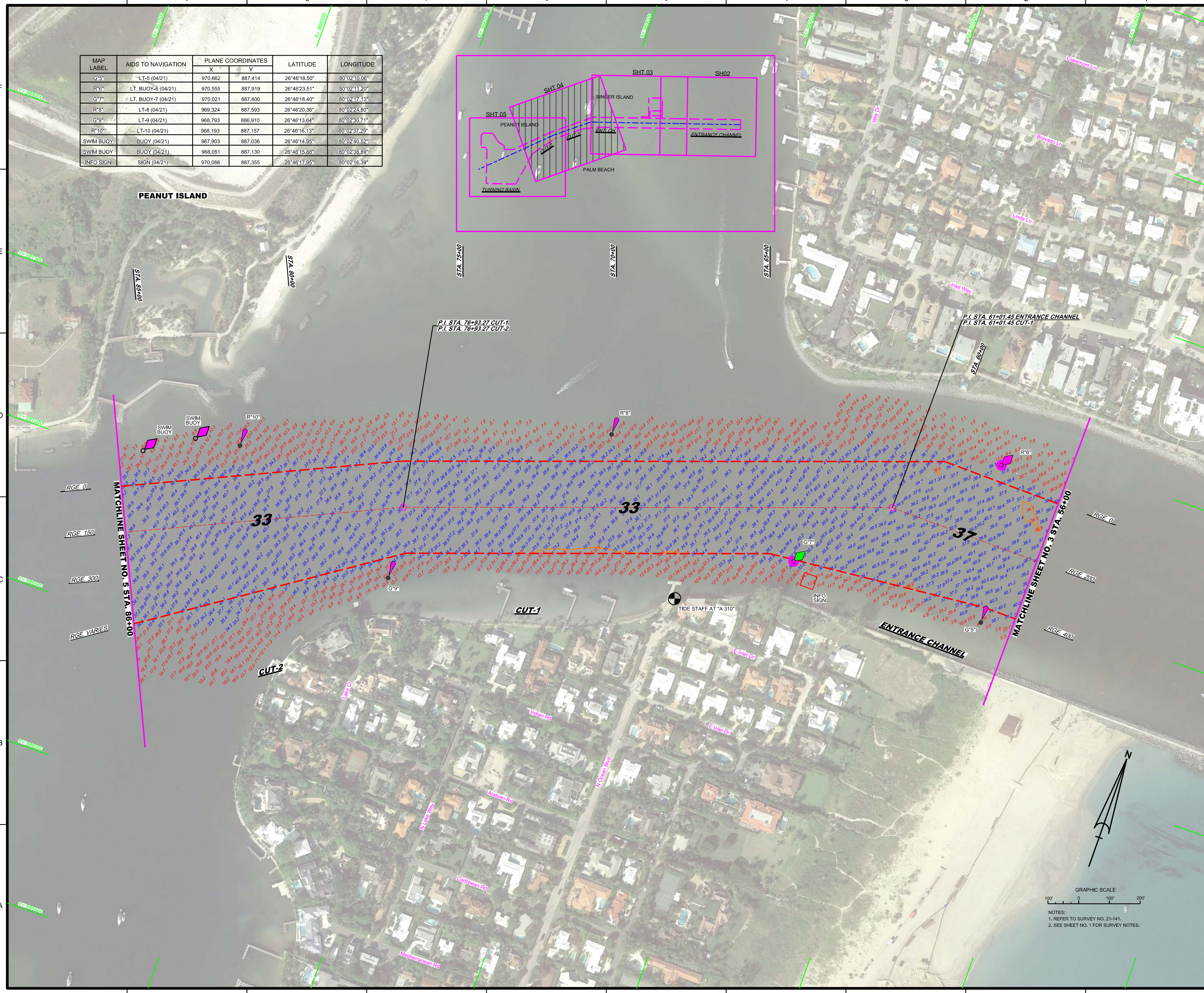


US Army Corps of Engineers
Jacksonville District

SAFETY ON THIS JOB
DEPENDS ON YOU

DEPARTMENT OF THE ARMY
JACKSONVILLE DISTRICT, CORPS OF ENGINEERS
JACKSONVILLE, FLORIDA

Drawn by: GHR
Checked by: GHR
Date: APR 2021



GRAPHIC SCALE
0 100' 200'

NOTES:
1. REFER TO SURVEY NO. 21-141.
2. SEE SHEET NO. 1 FOR SURVEY NOTES.

PLANNED PROJECT

MARCH HYDROGRAPHIC EXAM SURVEY FY21
25, 33, 35, 37 & 39-FOOT PROJECT
STA. 56+00 ENTRANCE CHANNEL THRU STA. 86+00 CUT-2

Scale: AS SHOWN

Drawing no. 4

SHEET 04 OF 05

